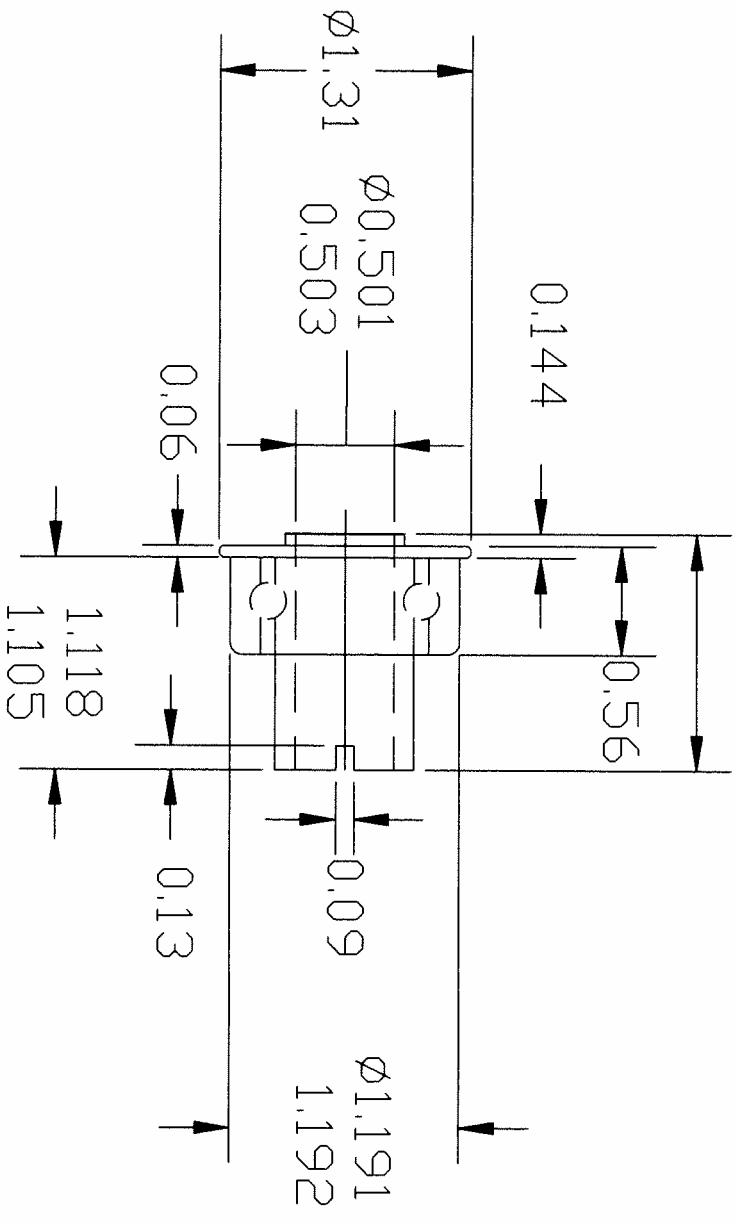


REV. C. N. NO.	DATE	CHANGE	NUMBER
A 06172	06/21/06	RELEASED	57703.11

1/2" ID BALL BEARING FOR
 2 1/2" HUB WIDTH WHEELS.

Q34 - CHROME STEEL BEARING

1.249+.005-.000



ESTIMATE: _____

SAMPLE ORDER: _____

FILE NUMBER: _____

THIS PRINT, INCLUDING ALL INFORMATION SET FORTH THEREON, IS THE PROPERTY OF COLSON CASTER CORPORATION AND IS LOANED IN CONFIDENCE SUBJECT TO RETURN UPON REQUEST AND WITH THE UNDERSTANDING THAT NO COPIES OF THIS PRINT OR OF THE INFORMATION SHALL BE MADE WITHOUT THE PRIOR WRITTEN CONSENT OF COLSON CASTER CORPORATION. ALL RIGHTS TO DESIGN AND INVENTION ARE RESERVED.

Colson Caster Corporation
 JONESBORO, ARKANSAS

SCALE: _____ DIMENSIONS IN [] ARE METRIC

TOLERANCE UNLESS OTHERWISE SPECIFIED:
 .XX = ±.015 [0.38] .XXX = ±.005 [0.13]
 ANGLES ±1'

DRW. NS _____ TITLE ACOR

DATE 06/21/06 Q34 BEARING

CKD. _____

MAT'L NO. _____ MATERIAL

PART NUMBER 57703.11

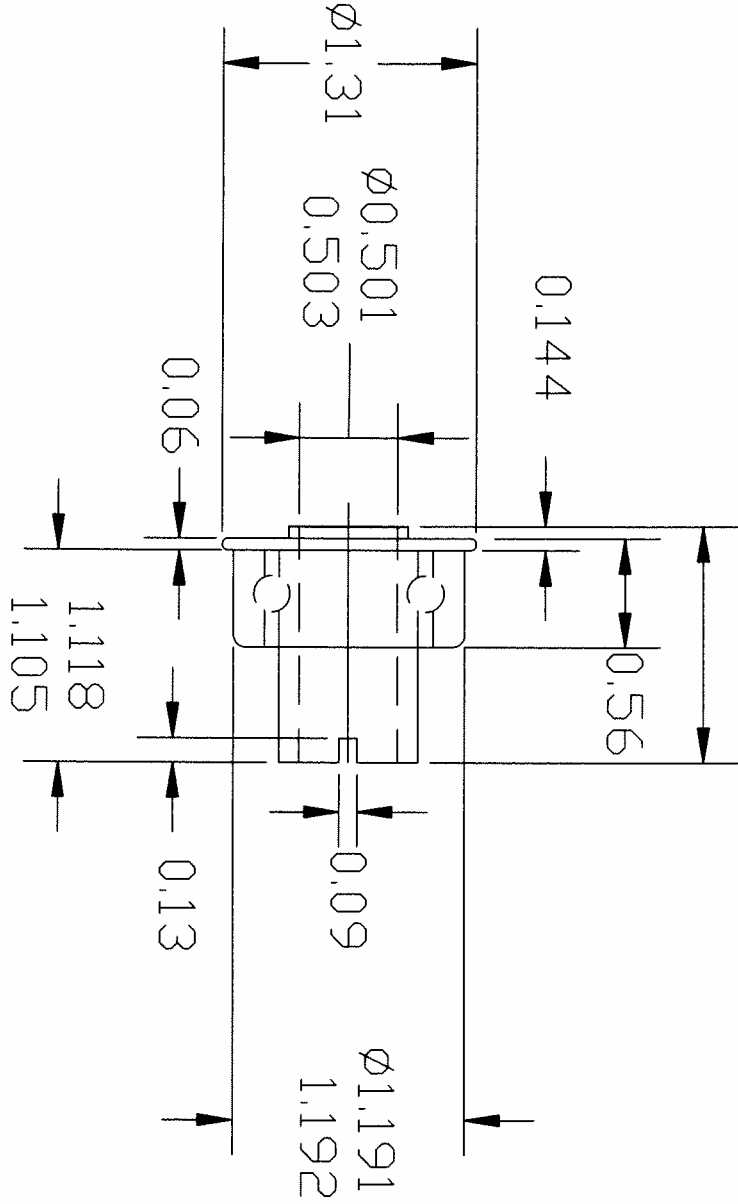
REV. A

REV. C. N. NO.	DATE	CHANGE	NUMBER
A 10084	3-19-10	RELEASED	57703.14

1/2" ID BALL BEARING FOR
2 1/2" HUB WIDTH WHEELS.

Q34 - STAINLESS STEEL BEARING

1.249+.005-.000



ESTIMATE:

SAMPLE ORDER:

FILE NUMBER:

THIS PRINT, INCLUDING ALL INFORMATION SET FORTH THEREON, IS THE PROPERTY OF COLSON CASTER CORPORATION AND IS LOANED IN CONFIDENCE SUBJECT TO RETURN UPON REQUEST AND WITH THE UNDERSTANDING THAT NO COPIES OF THIS PRINT OR OF THE INFORMATION SHALL BE MADE WITHOUT THE PRIOR WRITTEN CONSENT OF COLSON CASTER CORPORATION. ALL RIGHTS TO DESIGN AND INVENTION ARE RESERVED.



Colson Corporation
JONESBORO, ARKANSAS

NEXT ASS'Y.

TOLERANCE UNLESS OTHERWISE SPECIFIED.
XX = ±0.15 [0.38] XXX = ±0.05 [0.13]
ANGLES ±1'

MAT'L NO.

MATERIAL
PURCHASED

SCALE: DIMENSIONS IN [] ARE METRIC

DRW. C. AGEE
DATE: 3-19-10

TITLE

S/S Q34 BEARING

ACOR

PART NUMBER
57703.14

REV.